

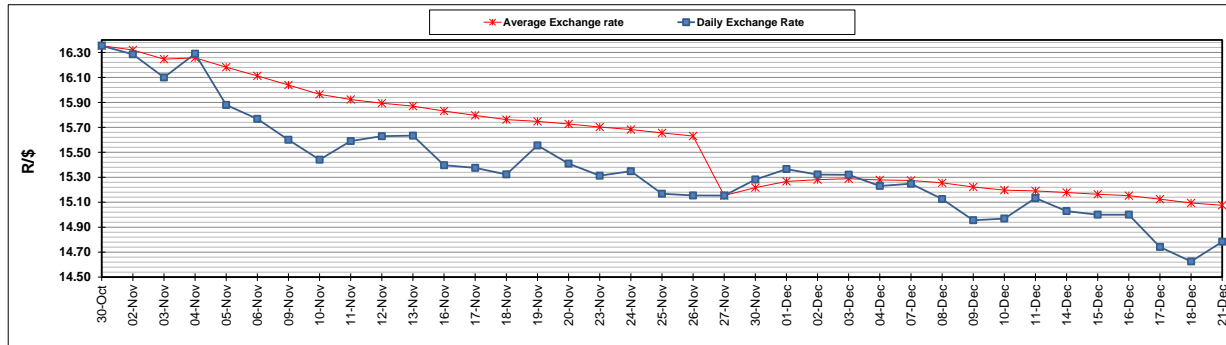
	PETROL 95 ULP	PETROL 93 ULP & LRP	DIESEL 0.05%	DIESEL 0.005%	ILL. PAR.
GAUTENG PUMP PRICE (SA c/l) AS FROM 02/12/2020	1,446.000	1,426.000	-	-	-
WHOLESALE PRICE (SA c/l) AS FROM 02/12/2020	-	-	1,245.420	1,247.820	684.688
SINGLE NATIONAL MAXIMUM RETAIL PRICE	-	-	-	-	856.000
BASIC FUEL PRICE - 21/12/2020 (SA c/l)	522.305	517.895	538.656	540.444	523.754
PRESS RELEASE CONTRIBUTION TO BFP 02/12/2020 - 21/12/2020 (SA c/l)	479.170	469.170	486.630	489.030	472.128
UNIT OVER/(UNDER) RECOVERY - 21/12/2020 (SA c/l)	(43.135)	(48.725)	(52.026)	(51.414)	(51.626)
AVERAGE BASIC FUEL PRICE 27/11/2020 - 21/12/2020	519.922	513.805	538.777	540.054	523.266
AVERAGE UNIT OVER/(UNDER) RECOVERY 27/11/2020 - 21/12/2020	(35.934)	(39.817)	(54.265)	(53.142)	(54.844)

ANALYSIS MOVEMENT OF AVERAGE OVER/(UNDER) RECOVERY

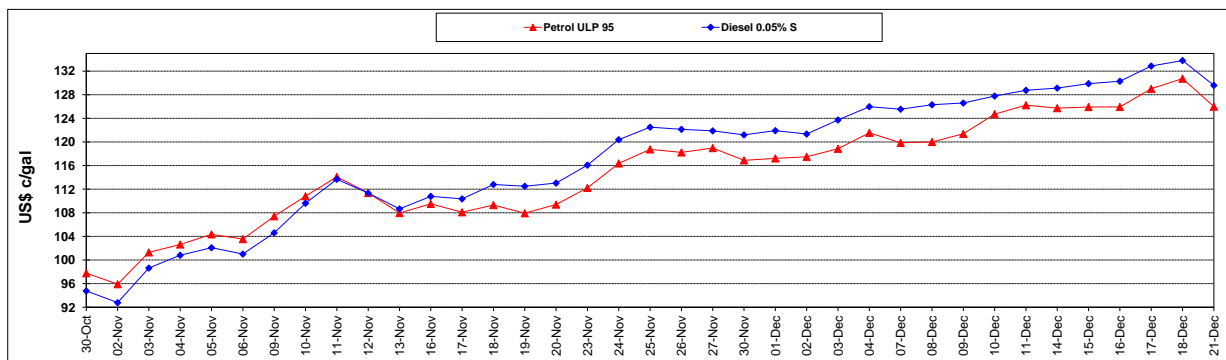
	PETROL 95	PETROL 93	DIESEL 0.05%	DIESEL 0.005%	ILL. PAR.
- MOVEMENT IN INTERNATIONAL PRODUCT PRICES	(55.078)	(58.736)	(74.104)	(73.028)	(74.111)
- MOVEMENT IN EXCHANGE RATE	19.144	18.919	19.839	19.886	19.267
AVERAGE UNIT OVER/(UNDER) RECOVERY 27/11/2020 - 21/12/2020	(35.934)	(39.817)	(54.265)	(53.142)	(54.844)

R/\$ EXCHANGE RATE - (R/\$14.7830 - 21/12/2020)

EXCHANGE RATE USED IN BASIC FUEL PRICE



INTERNATIONAL PRODUCT PRICES OF BASKET USED IN BASIC FUEL PRICE



BASIC FUEL PRICE IN SA CENTS PER LITRE

